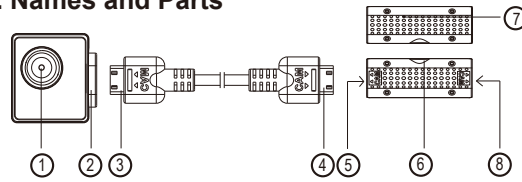


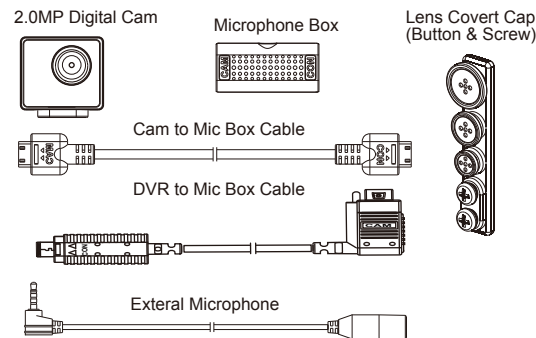
### 1. Names and Parts



- 1. Camera Lens
- 2. Cable Socket
- 3. Cable Jack
- 4. Cable Jack
- 5. Cable Socket
- 6. External Mic Port
- 7. Microphone Box
- 8. Cable Socket

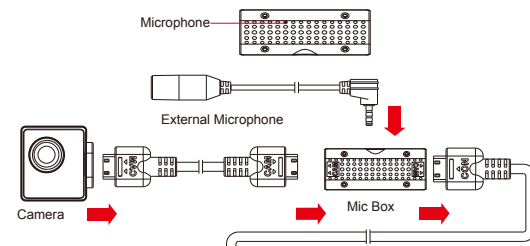
※ No microphones are available for USA market.

### 2. Package Content



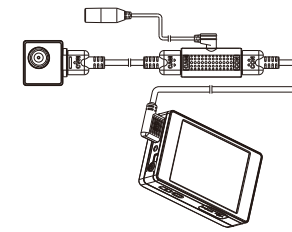
1

### 3. Camera Setup Illustration



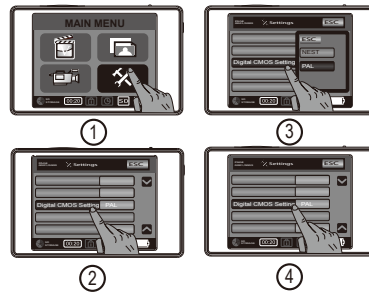
1. Connect one end of the Cam to Mic Box Cable to camera head and the other end to Mic Box.
2. Connect one end of the DVR to Mic Box cable to Mic Box and the other end to a LawMate DVR (Supported models are : PV-500EVO2U and PV-1000TOUCH5U.)
3. Depending on the recording environment, plug in external microphone to the socket on side of the Mic Box.

#### Connection of all Components



2

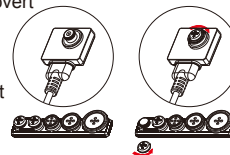
### 4. Setting Up Video System(NTSC/PAL)



1. Go to DVR main menu and tap on "Setting".
2. Scroll down at Setting menu and tap on "Digital Cam NTSC/PAL."
3. Select either PAL or NTSC based on user's country video signal system.(NTSC: USA,Japan... PAL: UK, Europe...)
4. After selection is made, tap again on "Digital CMOS Setting" to complete video system setting.

### 5. Lens Covert Cap(Button and Screw)

1. Unscrew the preferred lens covert cap at counterclockwise direction to remove it from the set.
2. Place the removed lens covert cap onto camera lens.
3. Screw at clockwise direction to attach the cap to the camera.

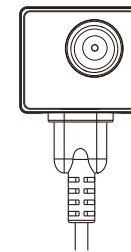


※ CMD-BU20U is NOT compatible with PV-500EVO2 and PV-1000TOUCH5.

3

## CMD-BU20U

### Full HD 2MP Digital Camera Quick Guide



LawMate, innovation never stops

**LawMate**®

V1.0